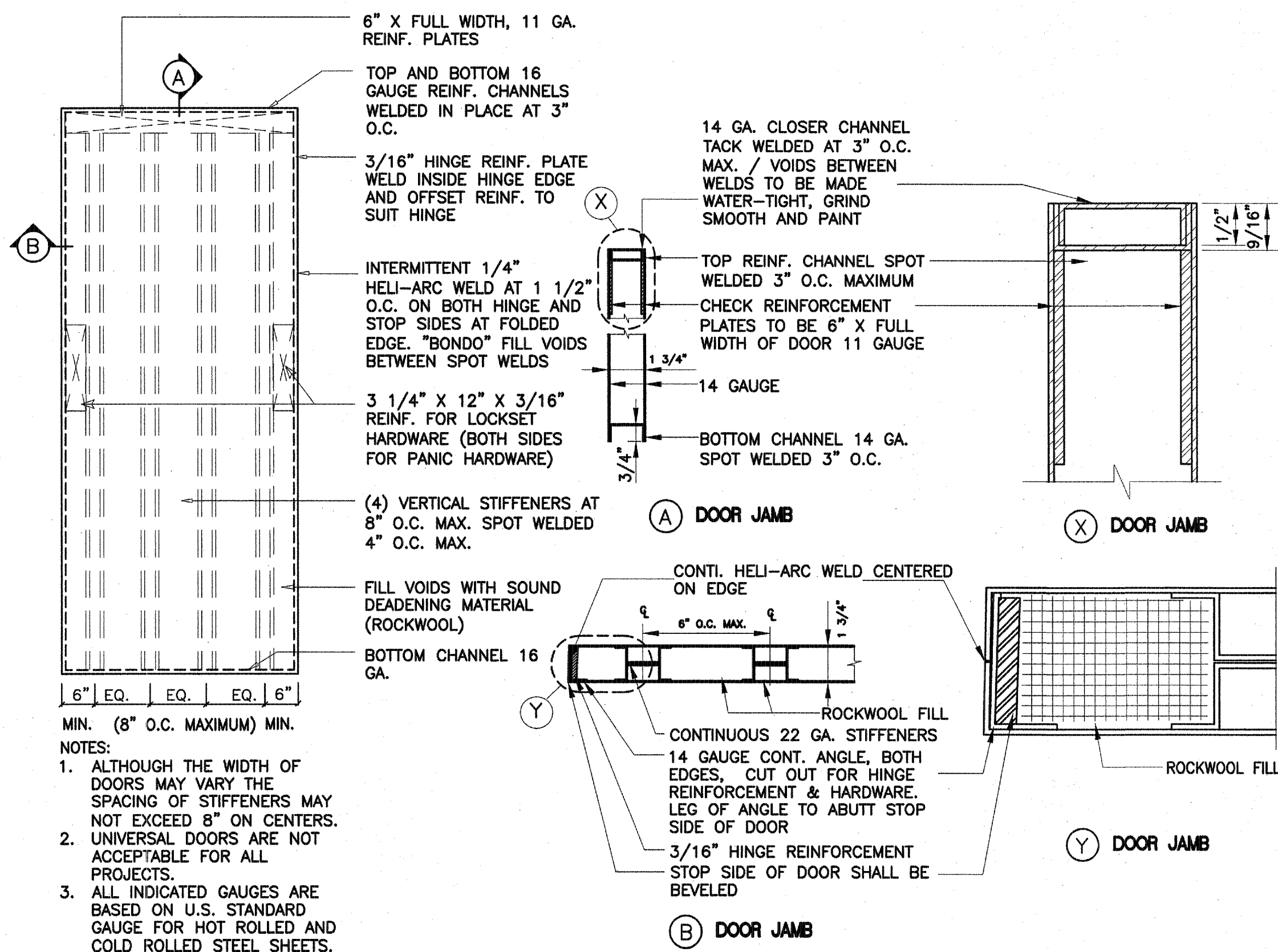


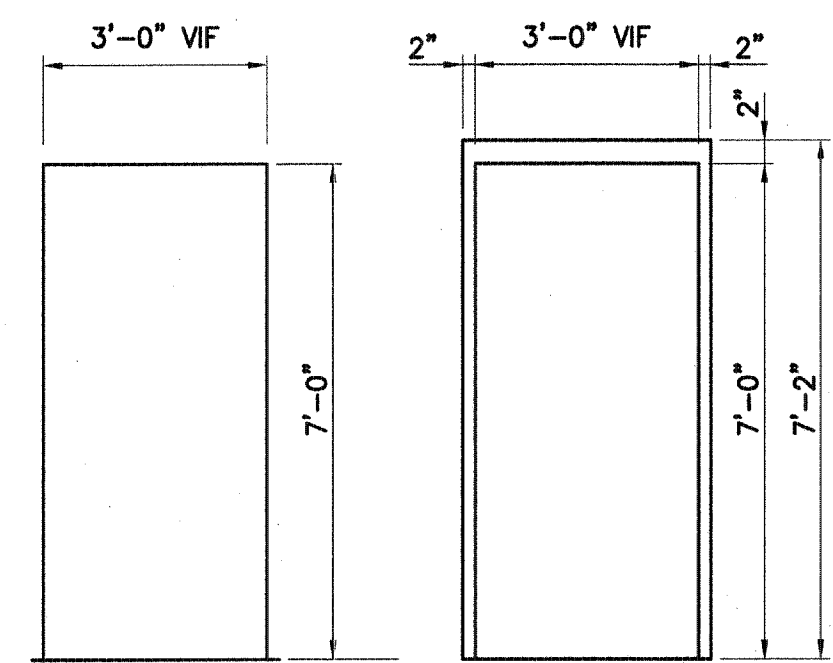
VERIFY LOCK
WALL BUCK
ADJUSTED AT
PROPER ALIGN
SEAL

DOOR HEAD, JAMB, AND SILL DETAILS



DOOR CONSTRUCTION ELEVATION

DOOR DETAILS



DOOR F (DOORS 1)
(FOR DOOR CONSTRUCTION
SEE DETAILS ABOVE)
DOOR ELEVATIONS

FRAME 8F (DOORS 1)
DOOR FRAME ELEVATIONS

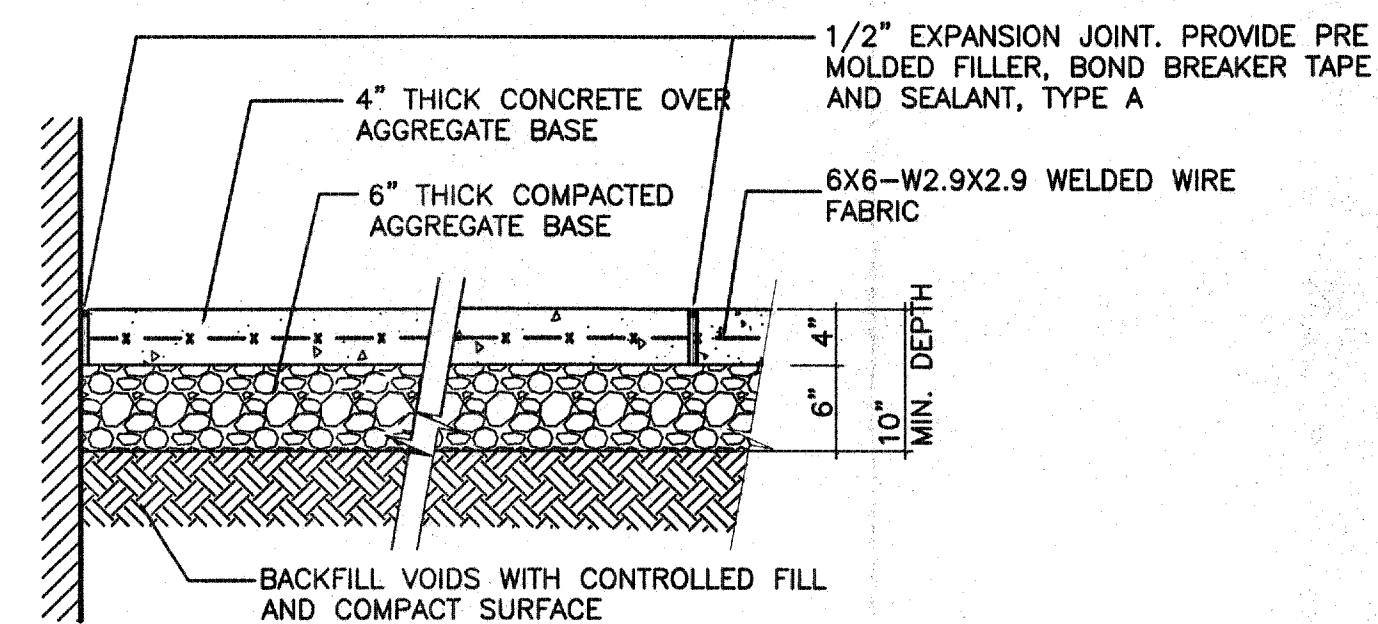
DOOR SCHEDULE										
DOOR #	FROM	TO	FRAME TYPE	DOOR TYPE	DOOR W x H	HEAD	JAMB	SILL	HDWE SET	LABEL
1	CORRIDOR	GAS METER ROOM	SF	F	3'-0" x 7'-0"	V.I.F.	1	2	—	1(SEE SPECS) 3 HR

ALL DOORS TO BE TYPE F, FRAMES TO BE TYPE SF

FINISH FLOOR TO CENTER LINE OF HARDWARE:

KNOB ON LOCK OR LATCH 38"
CROSS BAR ON FIRE EXIT DEVICE 38"
DOOR PULL GRIP 42"
PUSH-PULL BAR 42"
TOP HINGE - 5" FROM FRAME HEAD RABBIT TO TOP OF HINGE.
CENTER HINGE - EQUAL DISTANCE FROM TOP AND BOTTOM HINGE.
BOTTOM HINGE - 10" FROM FINISH FLOOR TO UNDERSIDE OF HINGE.

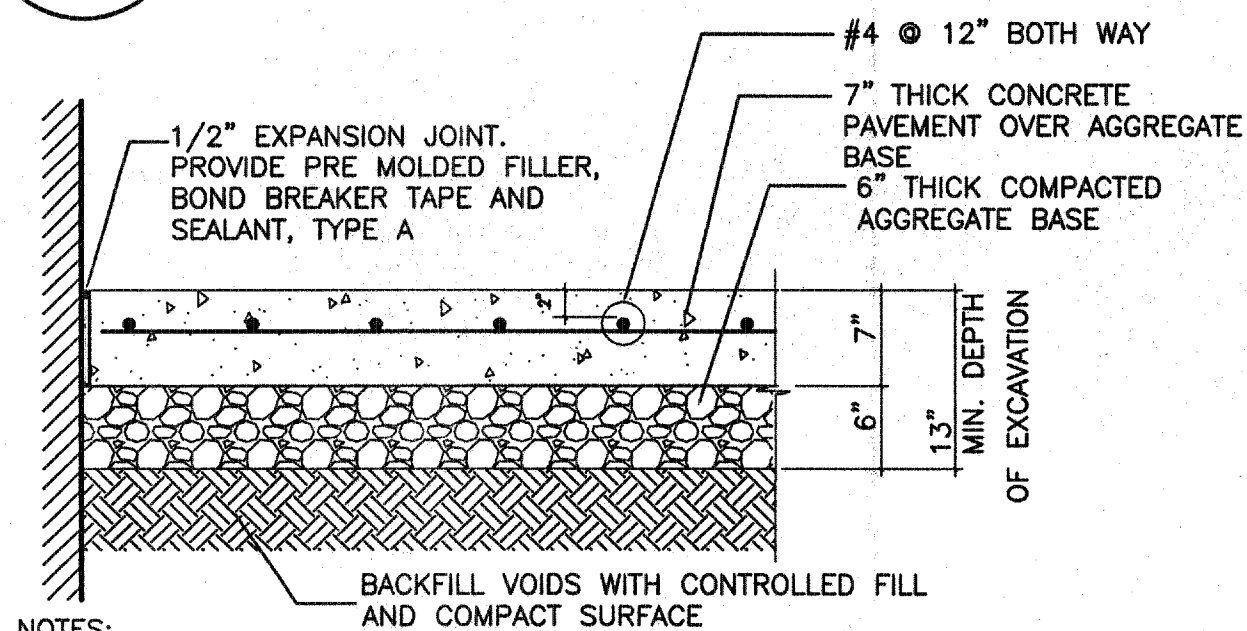
1 DOOR SCHEDULE AND DETAILS
A036 NOT TO SCALE



NOTES:

1. TOP OF NEW PAVEMENT SHALL MATCH TO TOP OF EXISTING PAVEMENT AND PITCH TO DRAIN.
2. PROVIDE NEW 1/2" WIDE EXPANSION JOINT AT THE JUNCTION OF NEW & EXISTING WORK AND AT APPROXIMATELY 20' GRID. PROVIDE SCORE LINE AT APPROXIMATELY 5' GRID.
3. PROVIDE PITCH TOWARD DRAIN IN THE SUB-BASE.

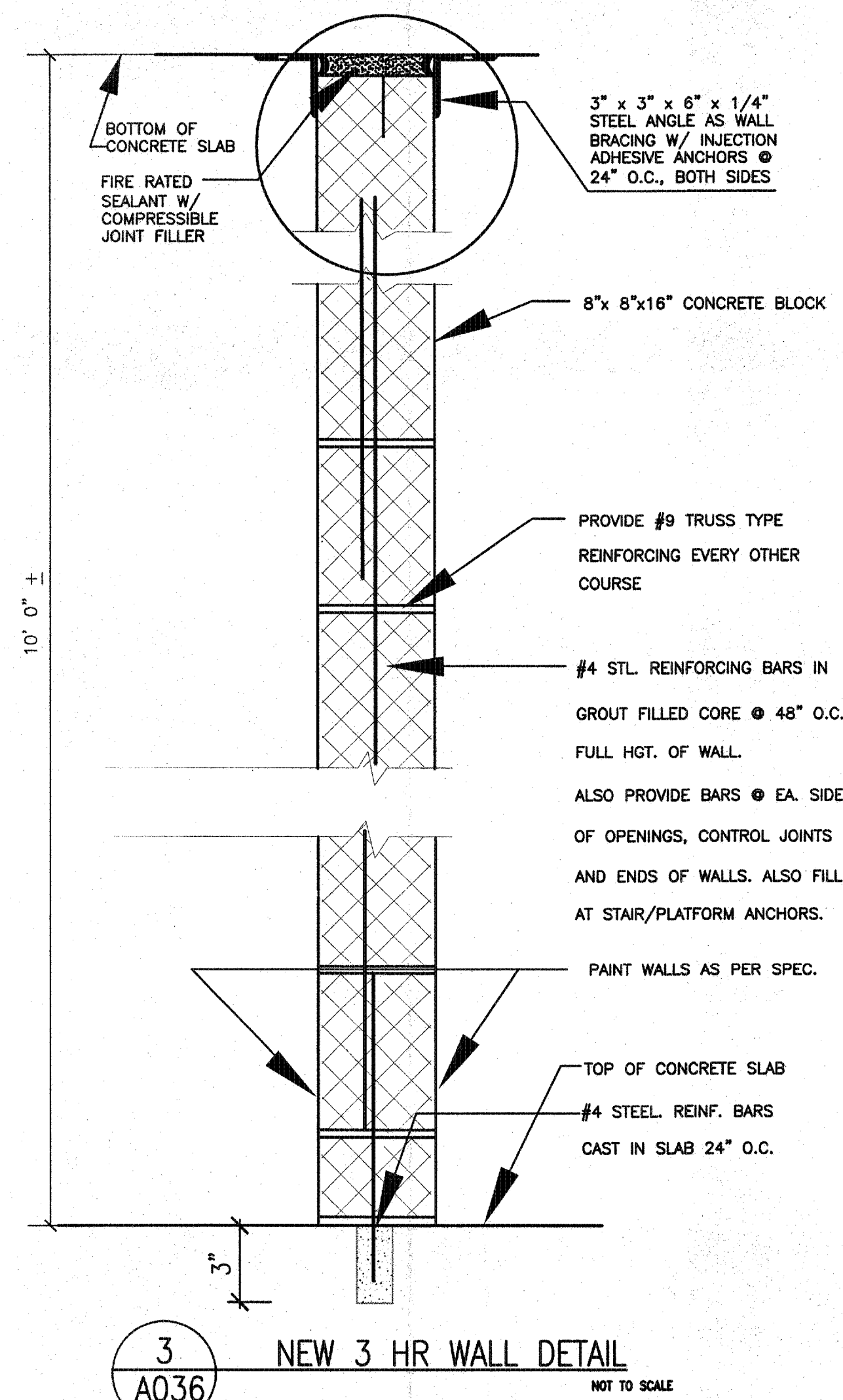
2 CONCRETE PAVEMENT -NON-VEHICULAR AREA
A036



NOTES:

1. TOP OF NEW PAVEMENT SHALL MATCH TO TOP OF EXISTING PAVEMENT AND PITCH TO DRAIN.
2. PROVIDE NEW 1/2" WIDE EXPANSION JOINT AT THE JUNCTION OF NEW & EXISTING WORK AND AT APPROXIMATELY 20' GRID. PROVIDE SCORE LINE AT APPROXIMATELY 5' GRID.
3. PROVIDE PITCH TOWARD DRAIN IN THE SUB-BASE.

2a CONCRETE PAVEMENT-VEHICULAR AREA
A036



3 NEW 3 HR WALL DETAIL
A036 NOT TO SCALE

President & CEO
Lorraine Grillo

Board of Trustees
Chancellor Carmen Fariña, Chairman
Curtis A. Harris
Emily A. Youssef



Architecture & Engineering

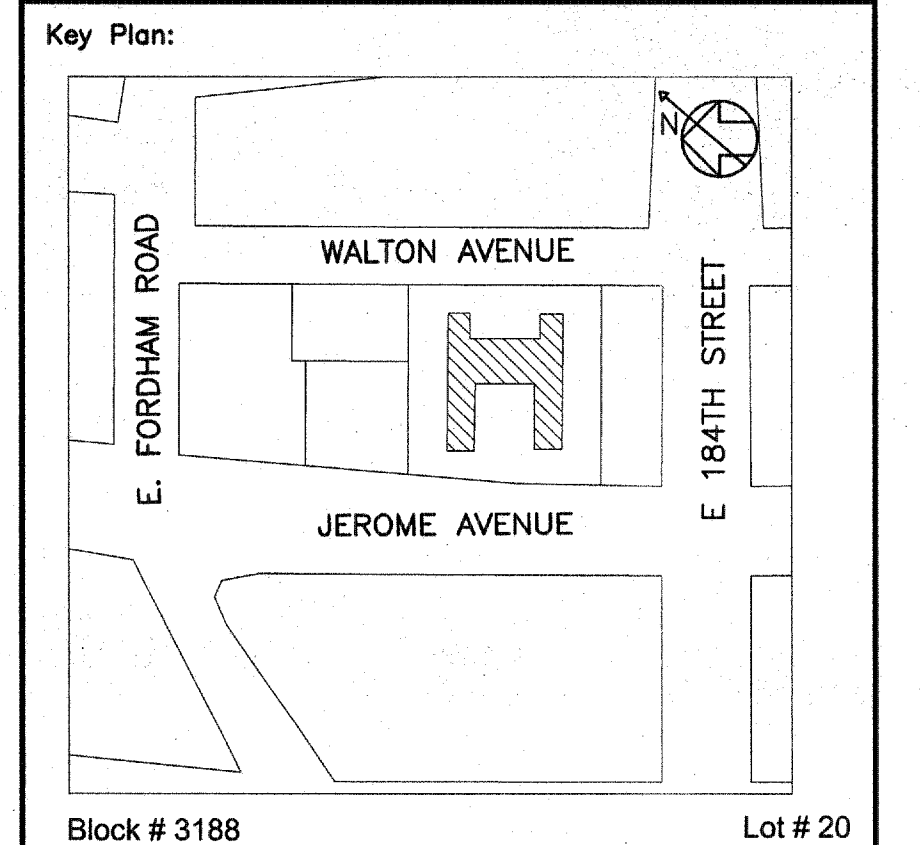
E. Bruce Barrett, R.A. LEED A.P., Vice President
Elen R. Abner, P.E., Senior Director, Design Consultant Management
Stanley Dahir, R.A., Director, Quality Control & Construction Support
Maria A. Gomez, P.E., LEED A.P., Director, A&E In-House Design
George D. Roussey, P.E., LEED A.P., Director, Technical Standards
Stacey Spann-Thorn, Director, Operations Support

Consultants:

NOTE: Drawing may be printed at reduced scale

IT IS A VIOLATION OF THE STATE EDUCATION LAW SECTION 7209 (2) FOR ANY PERSON TO ALTER AN ITEM IN ANY WAY UNLESS SUCH PERSON IS ACTING UNDER THE DIRECTION OF A LICENSED PROFESSIONAL ENGINEER, AND THE ENGINEER STAMPS SUCH CHANGES

No.	Date	Revision
1	12/06/2013	ISSUE FOR CONSTRUCTION



SCA Program Design Manager: J. BAEZ	
Project Architect/Engineer: P. DALY P.E.	
Discipline Lead: EDWARD ANASTASIO, R.A.	
Designer: E. ANASTASIO, R.A./ T. GAFFAR	
Drawn by: TAHMINA GAFFAR	
Checked by: EDWARD ANASTASIO, R.A.	
Design No.: D015404	Facility Code: X033
Date: 12/06/2013	

Project:
P.S. 33, BRONX
PLANYC BOILER CONVERSION
AND CLIMATE CONTROL
Address:
2424 JEROME AVENUE,
BRONX, NY 10468

Drawing Title:

ARCHITECTURAL DETAILS II

Drawing No.:
A036.00

Sheets in Contract Set:
6 of 58
Sheets in DOB Set:
6 of 41

A:\Design\A036\A036.00.dwg (12/21/14 - 2:12pm)